

PRODUCT SPECIFICATIONS

Model	X6	X8	X9
	Display		
Backlight	LED		
Display Area	1428.48 x 803.52 mm	1650.24 x 928.26 mm	1897 x 1068 mm
Active Screen Size	65"	75"	86"
Display Ratio	16:9		
Resolution	3840 x 2160 Pixels		
Display Colors	8-bit	8-bit	10-bit
Brightness	≥320nit	≥320nit	370nit
Contrast	4000:1		
Response Time	8ms		
Viewing Angle	178°		
Life Time	30000Hrs(Min.)		
	Speaker		
Speaker position	Forward		
Rated Impedance	8Ω		
Frequency Response	20-18K Hz		
Output S.PL.	≤13W		
Max.Power Output	2 x15W		
	Microphone		
Sensitivity	-38dBV±3dB		
Frequency Response	65Hz - 12.5KHz		
Polar Patterns	Omni-directional		
THD +N (1kHz @ +4dBu)	<0.05%		
Pickup range	8 meters		
Quantity	x 4 (1 Array)		
	Camera		
Position	Top x1 & Bottom x1 (Only one can use in the same time)		
Sensor	2M Pixels		
Lens	86°		
Video Resolution	1920 x 1080@30fps (Max)		
Frame Rate	30fps/60fps		
	Electrical		
Power Consumption	Maximum ≤220W Standby Mode ≤0.5W	Maximum ≤300W Standby Mode ≤0.5W	Maximum ≤450W Standby Mode ≤0.5W
Working Voltage	AC 100-240V, 50/60Hz		
	Touch		
Touch Surface	Optical Bonding Anti-Glare & Anti-Fingerprint Glass		
Transparency	88%		
Surface Hardness	7H		
Touch Technology	InGlass		
Touch Points	20 Points Touch in Windows/ 3 Points Touch in Embedded System		
Writing Tools	Stylus or Finger		
Communication Interface	USB-A		
	Transportation/Storage		
Storage Temperature/Humidity	-10°C - 50°C/10% - 90%		
Working Temperature/Humidity	0°C - 40°C/10% - 90%		
Mounting (optional)	Wall-mounted / Floor Stand		
Outline Dimension	1568x1045x88mm	1792x1170x102mm	2039x1315x101mm
Net Weight	45 kg	55 kg	71.6 kg
	Ports		
Front Interface Inputs	HDMI 1.4 (4K@30Hz) x1, USB(Touch) x1, USB (Dynamic) x2, Microphone In x1		
AV Inputs	HDMI (4K@60Hz x2, 4K@30Hz x1), DP (4K@60Hz) x1, USB (Touch) x4		
AV Outputs	HDMI Out (4K@60Hz) x1, Line Out x1, SPDIF out		
Other	USB2.0 x2, RS232 x1, RJ45 x2, USB3.0 x1, OPS Slots (4K@60Hz),DC 5V-2A out		
	Speciality		
Build in Wi-Fi	2.4G/5G		
OPS-PC	Included		



Europe office
Ronda de Poniente, 2, 1ª planta,
Oficina 1B, 28760, Tres Cantos,
Madrid, Spain
TEL: +34 911169178
Want to buy:
info_eu@newline-interactive.com
Become our partner:
partner_eu@newline-interactive.com

Newline Interactive Inc.
101 East Park Blvd. Suite 807 Plano,
TX 75074, USA
TEL: +1 888 233 0868
Want to buy:
info@newline-interactive.com
Become our partner:
partner@newline-interactive.com

Asia Pacific Office
4F-3, No.76 Sec.2, Jiafeng S. Rd,
Zhubei City, Hsinchu Country,
30272, Taiwan
TEL: +886 35504768
Want to buy:
info_ap@newline-interactive.com
Become our partner:
partner_ap@newline-interactive.com

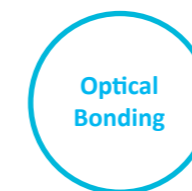
Newline

TRU TOUCH X Series 4K

The Next Generation of Collaboration

SIMPLY SMARTER COLLABORATION

The new TRU TOUCH X6, X8 and X9 feature InGlass™ technology for superior writing experience and combine advanced technology with elegance.



Collaboration at your fingertips

TRUTOUCH 4K X Series debuts with evolutionary innovation leading the way to a brand new user experience like you never expected.

COMMUNICATE BETTER, COLLABORATE EASIER

Easy collaboration anytime, anywhere anytime, anywhere.

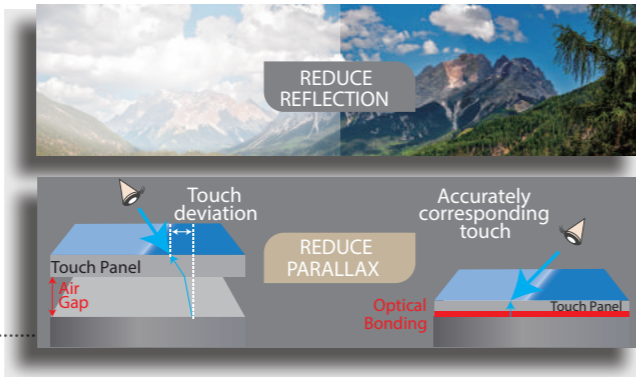


SUPERIOR WRITING EXPERIENCE

Advanced InGlass™ technology for responsive touch Digital Whiteboard with seamless writing experience.

CLEAR AND ROBUST IMAGE

X6, X8 and X9 make use of the latest optical bonding technology which reduces reflections resulting in improved contrast and reduced parallax. With 4K UHD resolution, they deliver clear and robust images that give you the best video conferencing experience.

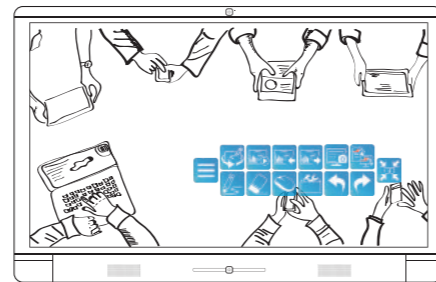


POWERED BY

MONTAGE by DisplayNote Technologies



ideaMax



Flexible connection and communication

Quick access annotation & intuitive interface

- Wireless Collaboration
- Connect with any Device
- Remote PC control
- Video / Voice Communication

- UI
- Multi-OS
- Hand-Writing Recognition
- Tools

FEATURES

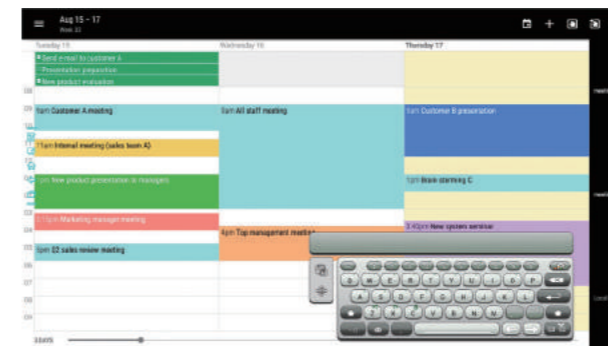
Optical Bonding makes the touch panel more sturdy and protects the display from dust and moisture. **All-in-one** system requires no additional equipment such as camera microphone nor speakers. **With OPS slot**, users can install any of their favorite Windows applications without limit.



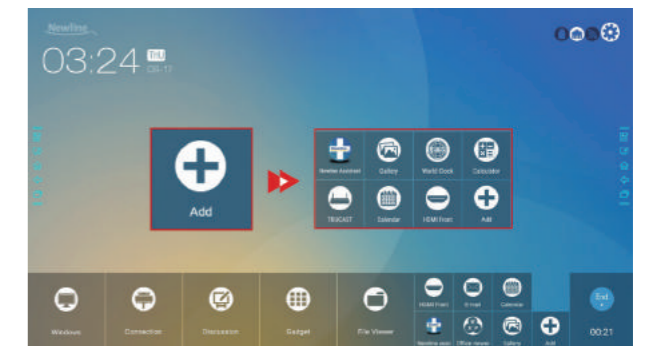
USER INTERFACE

Efficient meetings on the go easily accessible

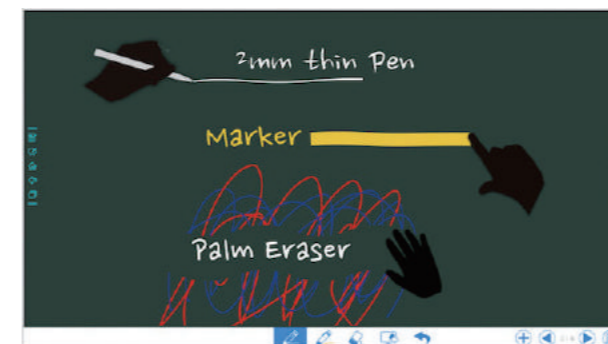
- FloatNSplit tablet keyboard
- File Commander
- Business Calendar 2
- Aqua Mail
- Office Suite



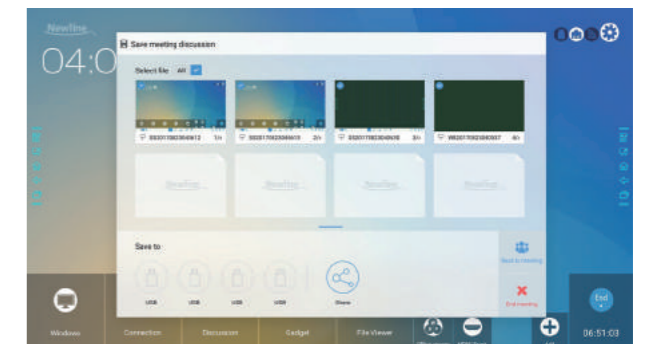
Scheduling function for the meeting room agenda.



Become an expert with an intuitive interface.



Enhance communication with discussion board/annotation.



One click share by Email or USB flash.